






**84/1 Brenda Park Shack Road Brenda Park SA**

7  3  6 

Built with style and attention to detail to provide a fabulous holiday retreat for family and friends - this property offers 7 spacious bedrooms, including a huge 10-metre dormitory (Bed 7) or rumpus room with adjacent shower room and toilet on the ground floor.

There is also a spacious laundry and a large storage area on the same level which is ideal for ski equipment.

Upstairs, the bedrooms include a generous Master with separate wardrobes and large ensuite. Every bedroom has a ceiling fan as well as ducted air-conditioning.

The main bathroom for the upstairs bedrooms includes separate bath and shower, as well as a separate toilet.

The living area with kitchen and dining offers 88 square metres of open space and river views.

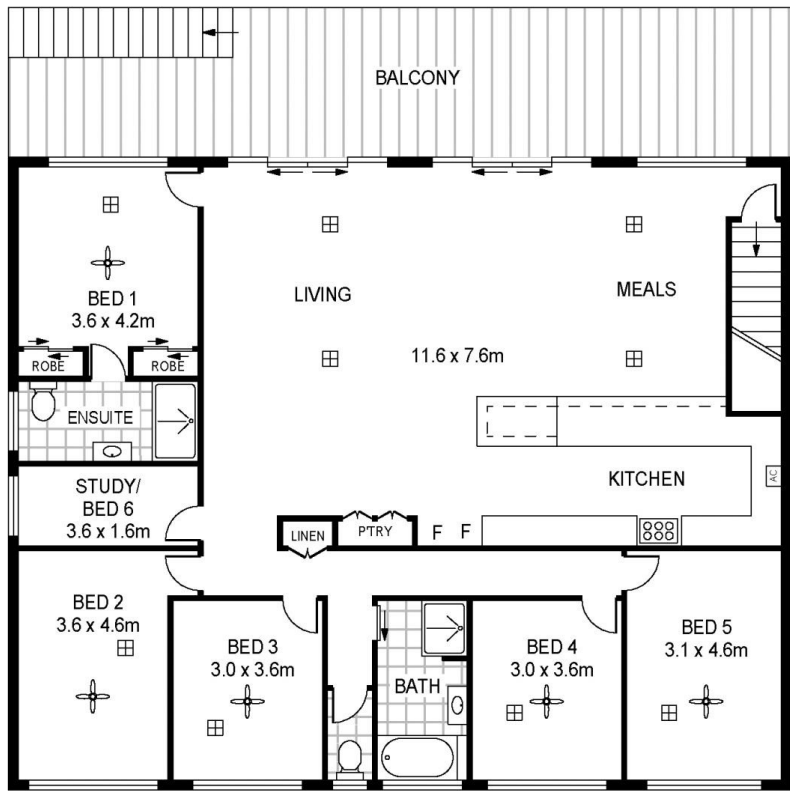
There is an expansive wooden deck overlooking the water

**Type** : House  
**Price** : Under Contract  
**Building Size** : 251 sqm  
**Land Size** : 1514 sqm  
**View** : <https://www.martinrealestate.com.au/sale/sa/riverland/brenda-park/residential/house/8135170>

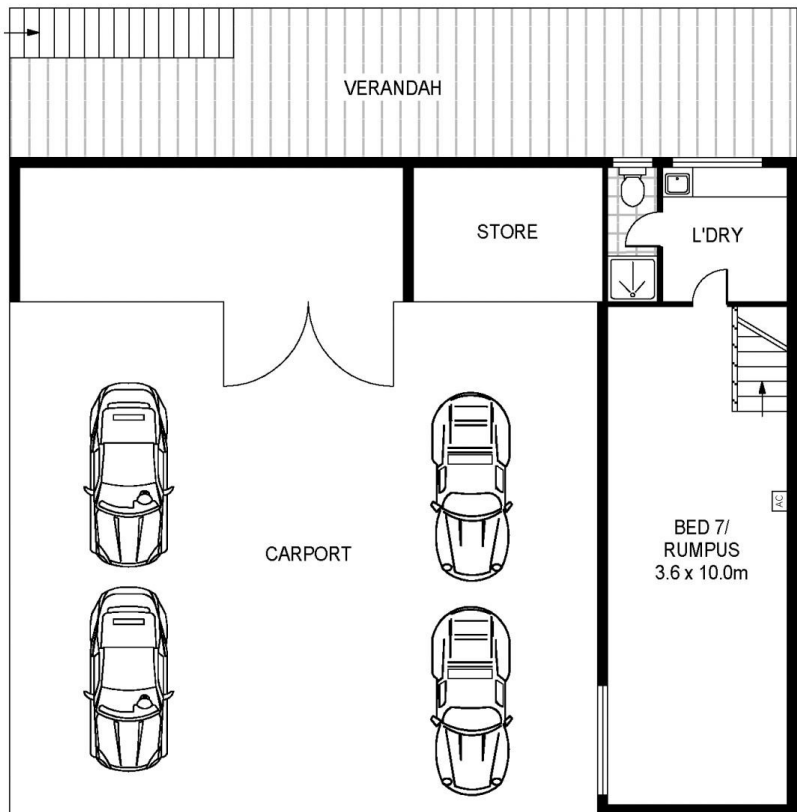


**Colin Martin**  
 08 8261 7111

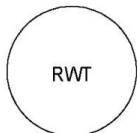
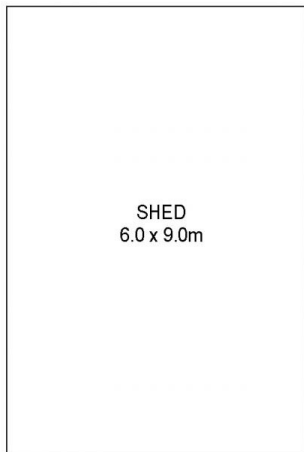
[For full version visit the website](https://www.martinrealestate.com.au)



UPPER LEVEL



GROUND LEVEL



Scale in metres. Indicative only. Dimensions are approximate. All information contained herein is gathered from sources we believe to be reliable. However we cannot guarantee its accuracy and interested persons should rely on their own enquiries

INT : 251m<sup>2</sup>

Site 84, 1 Brenda Park Shack Road, Brenda Park