

2415 Murbko Road Murbko SA

We are proud to be presenting you two very unique opportunities to secure your own substantial slice of the River Murray.

Kildalton Homestead and Kildalton Farm + Cottage both offer a different kind of River Murray experience. With the privacy afforded by acreage you can enjoy the river lifestyle unimpeded by neighbours.

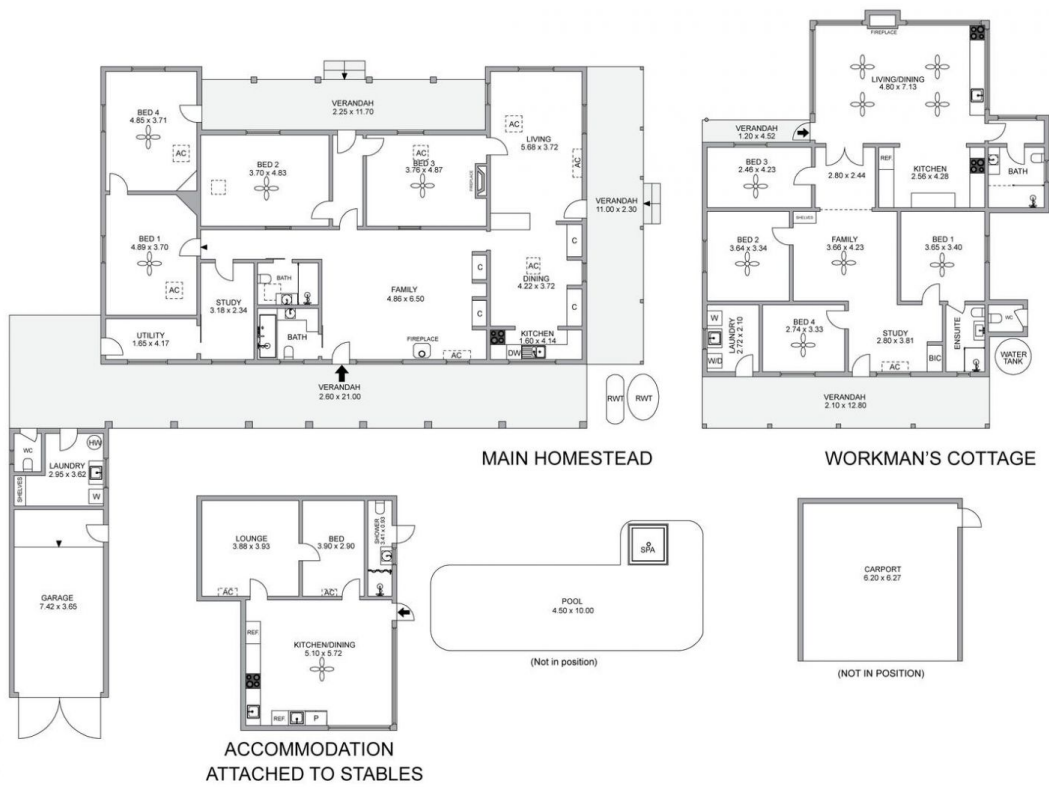
In addition to a four-bedroom cottage the farm also has four shearer quarters plus a self contained one-bedroom flat alongside the stables. This takes the total bedroom tally to nine, giving you the opportunity to accommodate friends and family or generate additional accommodation income.

Type : Rural
Price : CONTACT AGENT
Land Size : 29.18 ha
View : <https://www.martinrealestate.com.au/sale/sa/riverland/murbko/residential/rural/8108472>



Colin Martin
08 8361 7111

[For full version visit the website](https://www.martinrealestate.com.au)



Living area	427sqm
Verandah	147sqm
Garage	21sqm
Total area	595sqm



2415 MURBKO ROAD, MURBKO

TOOP+TOOP

Scale in metres. Indicative only. All information contained herein is obtained from source we believe to be accurate. We cannot guarantee its accuracy. Interested persons should make and rely on their own enquiries