






165 Scotts Creek Shack Road Morgan SA

3  2  6 

This stunning modern built design is designed to take the maintenance out of the holiday.

With absolute river frontage a home with open floor plan of living and an unobstructed river view alfresco balcony.

Inside is comfort and luxury.

Open meals family living, 3 bedrooms, central bathroom, walk in robe, stunning kitchen with butler's pantry.

Come downstairs to ample parking and another alfresco entertaining area and 2nd bathroom.

Surrounded with lawns that look amazing, stroll down to the river onto your pontoon deck, what a great place to enjoy a quiet wine.

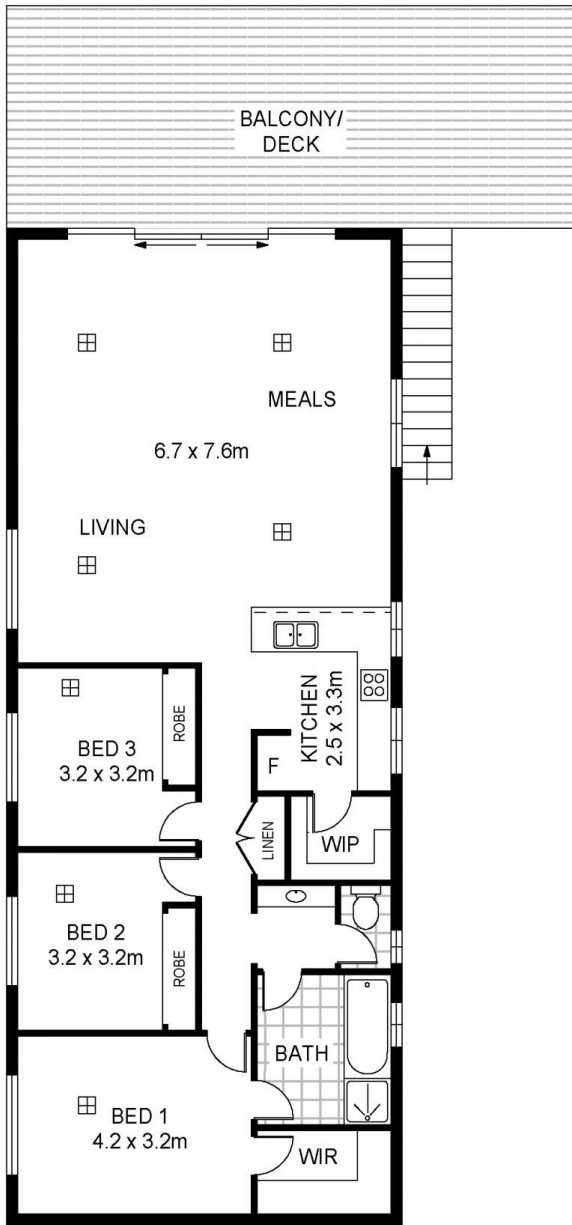
Not forgetting the car enthusiasts, a triple garage with hoist, 3 roller doors, plus pump house and the list goes on and on!

LOVE IT, BUY IT AND ENJOY IT!

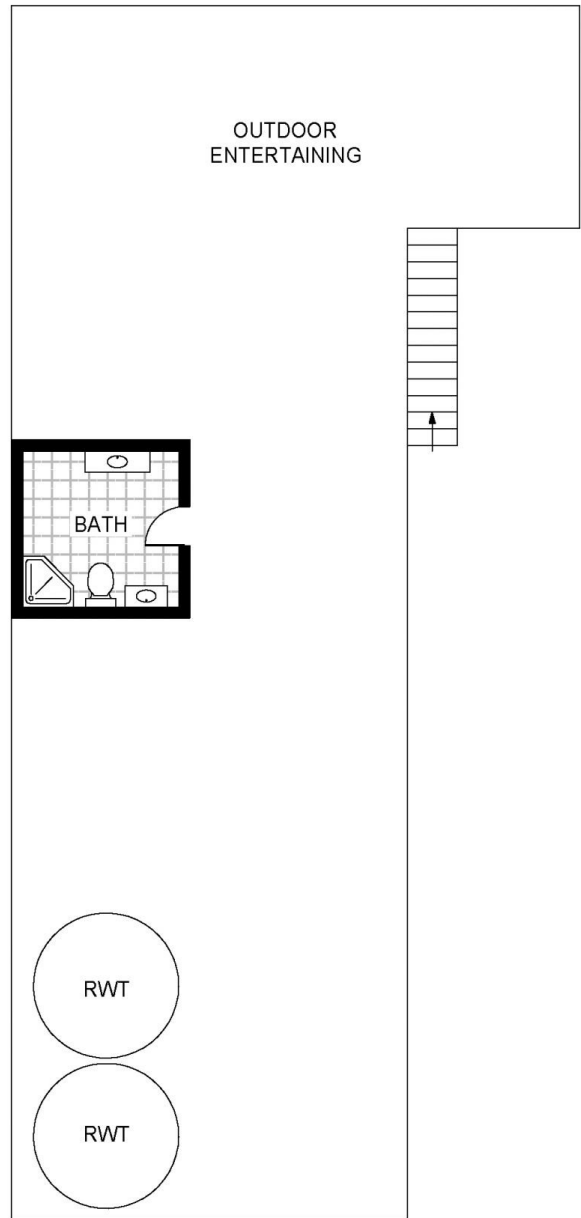
Price : BEST OFFER by 31st JULY 2024 (USP)
Building Size : 131 sqm
View : <https://www.martinrealestate.com.au/sale/sa/riverland/morgan/residential/house/8067778>



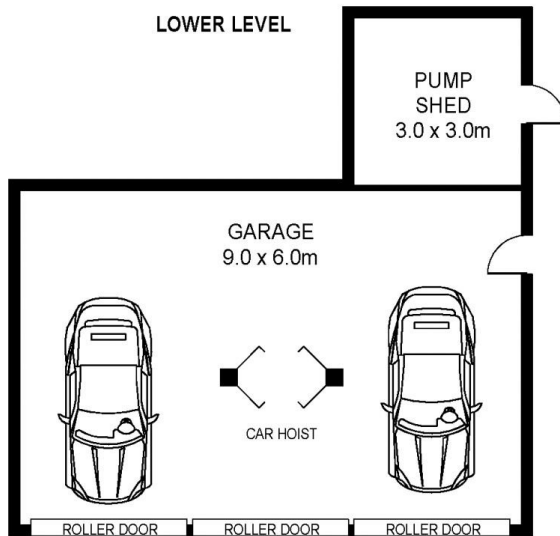
Colin Martin
08 8361 7111



UPPER LEVEL



LOWER LEVEL



Scale in metres. Indicative only. Dimensions are approximate. All information contained herein is gathered from sources we believe to be reliable. However we cannot guarantee its accuracy and interested persons should rely on their own enquiries

INT : 131m²
GARAGE : 54m²

165 Scotts Creek Shack Road, Morgan