






**14/39 Crighton Avenue Royal Park SA**

2  1  1 

You'll love living in the heart of one of Adelaide's most vibrant new neighbourhoods.

This stunning apartment with a streamline interior is sure to please. From the front door to the back, the attention to detail is paramount.

A low maintenance home, presenting a spacious floor plan designed for comfortable living. Perfectly suited to couples and investors alike in the increasingly popular suburb of Royal Park.

Enjoy a functional floor plan incorporating added storage, generous room sizes and a private balcony. This apartment has more to offer than meets the eye.

West Lakes Golf Club and Shopping Centre and public

**Price** : CONTACT AGENT

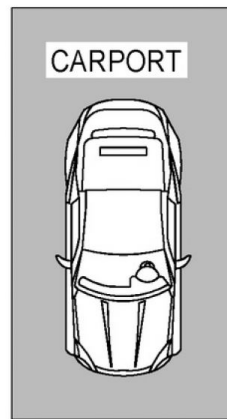
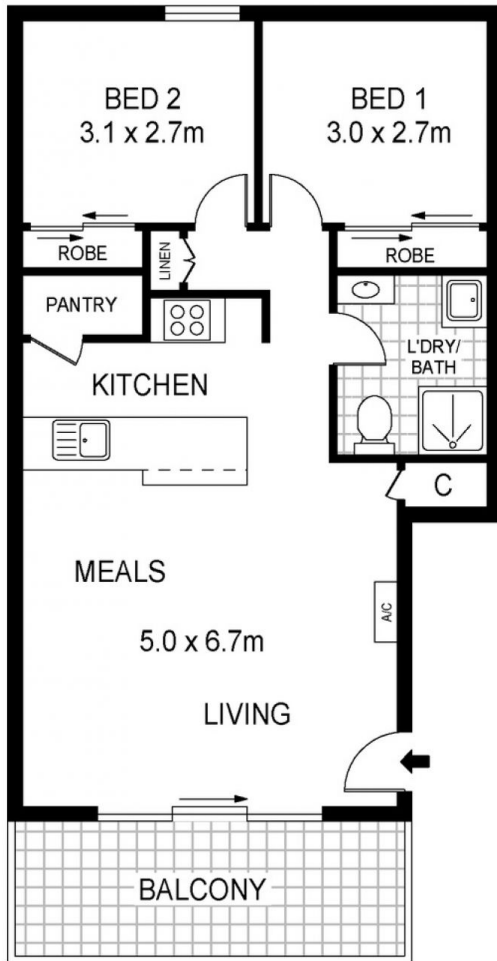
**View** : <https://www.martinrealestate.com.au/sale/sa/western-beachside-suburbs/royal-park/residential/apartment/8033901>



**Colin Martin**  
08 8361 7111



**Ann Preston Flint**  
08 8361 7111



Scale in metres. Indicative only. Dimensions are approximate. All information contained herein is gathered from sources we believe to be reliable. However we cannot guarantee its accuracy and interested persons should rely on their own enquiries

INT : 60m<sup>2</sup>

14/39 Crighton Avenue, Royal Park