



7/481 Fullarton Road Highgate SA

2  1  1 

Easy access to the Eastern Freeway to the Adelaide Hills and beyond.

Actually located in quiet Avenue Road around the corner from Fullarton Road.

This attractive upper-level unit has its own private entrance, shared with one neighbour. The construction is solid brick throughout, including concrete floors for sound reduction.

There are two generous bedrooms and a spacious open-style living-dining-kitchen area, light-filled and airy.

There is allocated, off-street, undercover parking.

The property is protected by high walls and locked gates which open onto an attractive, landscaped garden with

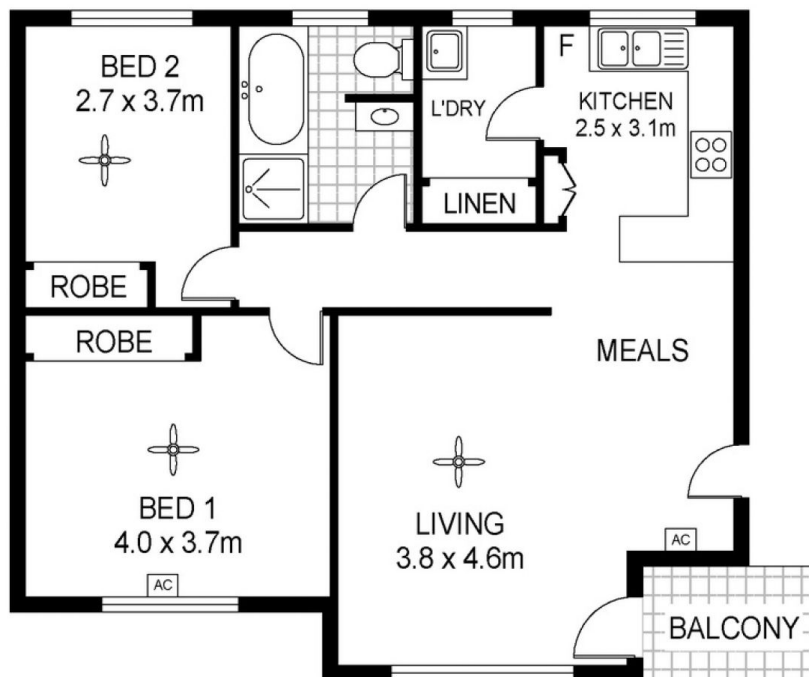
Building Size : 81 sqm
View : <https://www.martinrealestate.com.au/sale/sa/eastern-suburbs/highgate/residential/unit/7558134>



Brian Morgan
0405 100 010



Ann Preston Flint
08 8361 7111



Scale in metres. Indicative only. Dimensions are approximate. All information contained herein is gathered from sources we believe to be reliable. However we cannot guarantee its accuracy and interested persons should rely on their own enquiries

INT : 72m²

7/481 Fullarton Road, Highgate