

44 Clifton Street Camden Park SA

4 1 4

Roll up your sleeves - set on 1110 sqm allotment (approx)

Renovate this large 4 bedroom solid cream brick with separate sleep out.

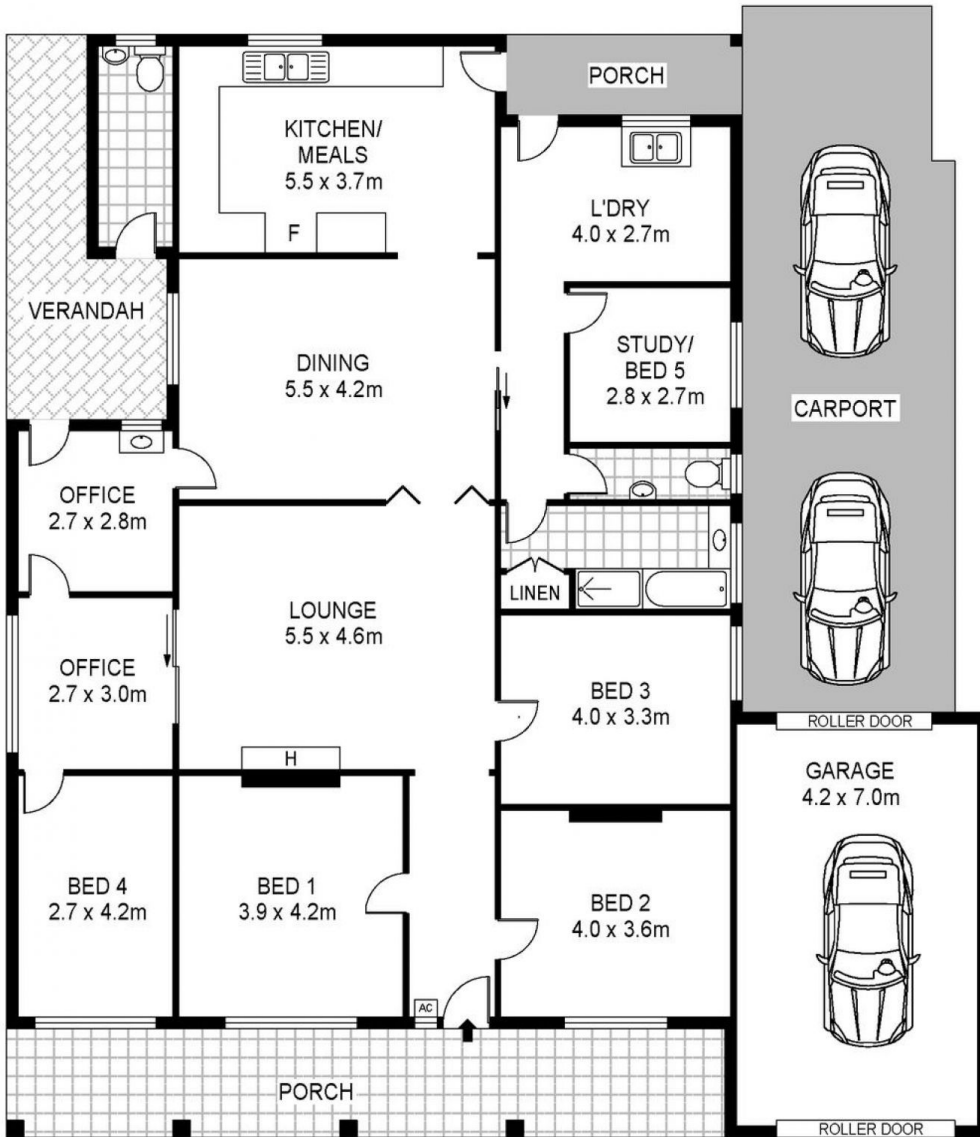
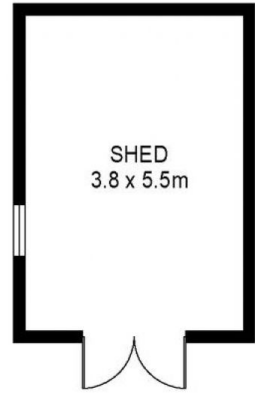
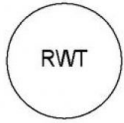
- * Huge kitchen meals dining family area
- * Garage UMR
- * 2.8m ceilings
- * Quiet street
- * 10 minutes to Adelaide CBD
- * 10 minutes to Glenelg beach
- * Transport, schools, shopping all around you
- * Lifestyle location

OWNER SAYS SELL!!

Building Size : 193 sqm
Land Size : 1110 sqm
View : <https://www.martinrealestate.com.au/sale/sa/western-beachside-suburbs/camden-park/residential/house/6718749>



Colin Martin
08 8361 7111



Scale in metres. Indicative only. Dimensions are approximate. All information contained herein is gathered from sources we believe to be reliable. However we cannot guarantee its accuracy and interested persons should rely on their own enquiries

Area	m ²
Living	190
Shed	21
Garage	29

44 Clifton Street, Camden Park